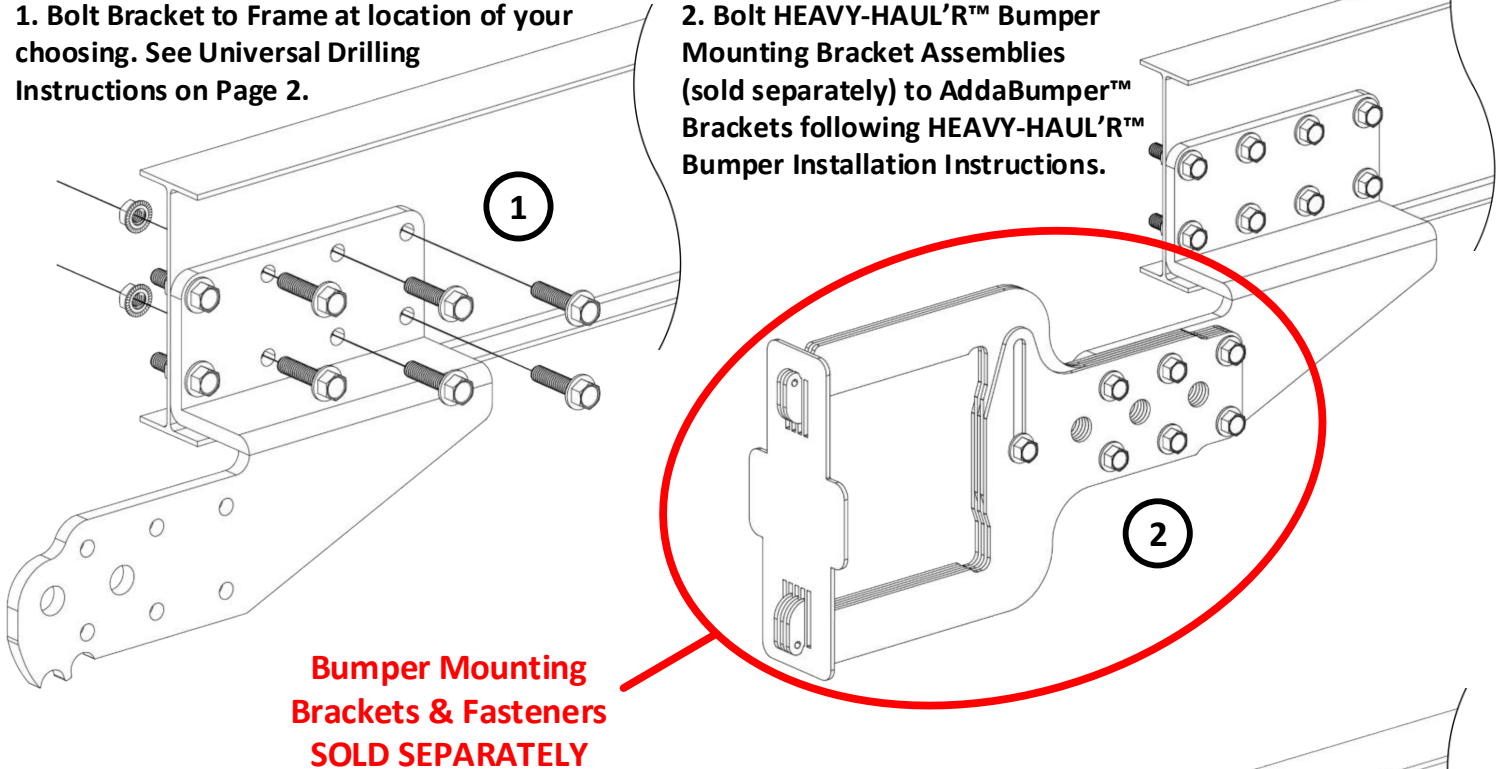


## AAUZ Z-Bracket Installation

1. Bolt Bracket to Frame at location of your choosing. See Universal Drilling Instructions on Page 2.

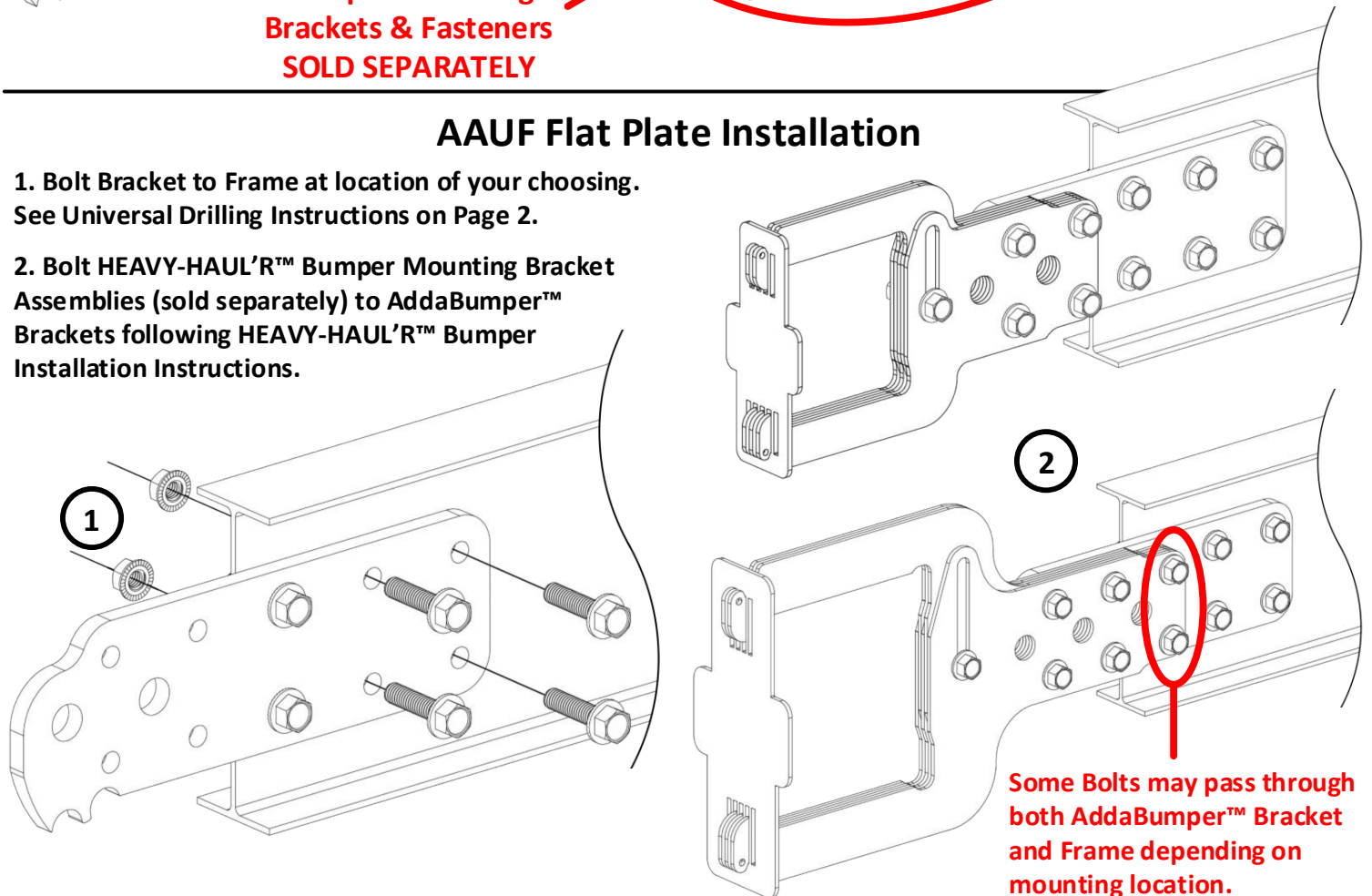
2. Bolt HEAVY-HAUL'R™ Bumper Mounting Bracket Assemblies (sold separately) to AddaBumper™ Brackets following HEAVY-HAUL'R™ Bumper Installation Instructions.



## AAUF Flat Plate Installation

1. Bolt Bracket to Frame at location of your choosing. See Universal Drilling Instructions on Page 2.

2. Bolt HEAVY-HAUL'R™ Bumper Mounting Bracket Assemblies (sold separately) to AddaBumper™ Brackets following HEAVY-HAUL'R™ Bumper Installation Instructions.

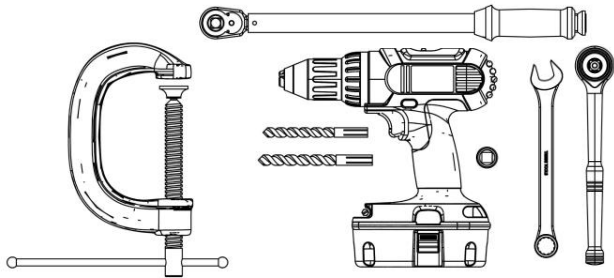


Visit [www.mount-n-lock.com/installs](http://www.mount-n-lock.com/installs) for full-size instructions.

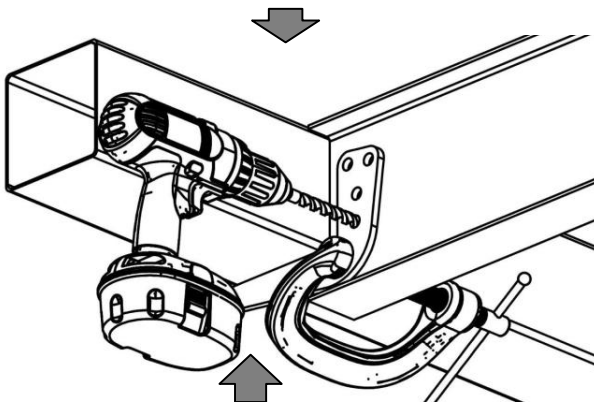
## Universal Drill & Bolt Instructions

### RECOMMENDED TOOLS

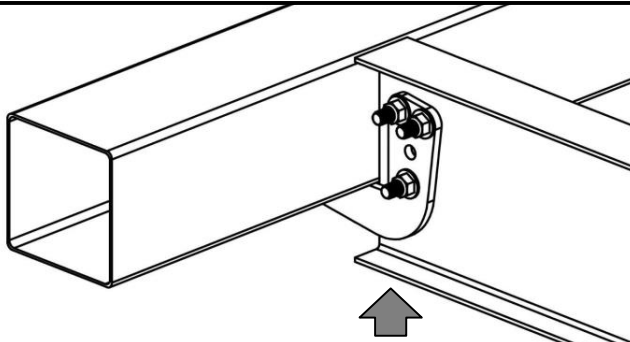
9/16" wrench, torque wrench with 9/16" socket, power drill with 3/8" bit, and a C-Clamp. If using bolts as self-tappers, add 11/32" bit and a ratchet.



### HOW TO FASTEN PARTS USING NUTS AND BOLTS (N&B)\*



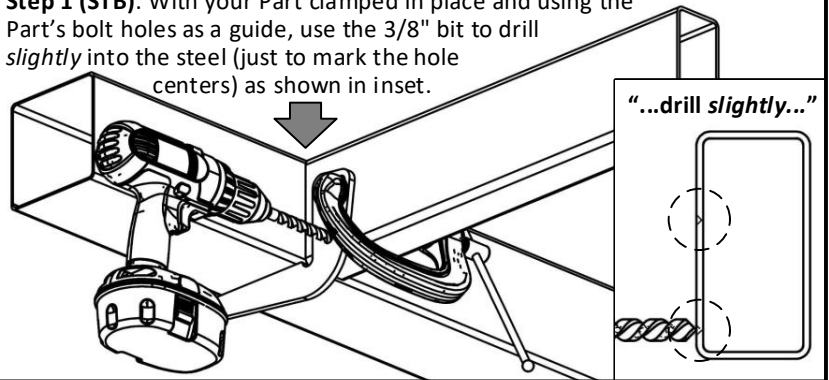
**Step 1 (N&B):** With your Part clamped in place and using the Part's bolt holes as a guide, use the 3/8" bit to drill *completely* through the wall of the frame member.



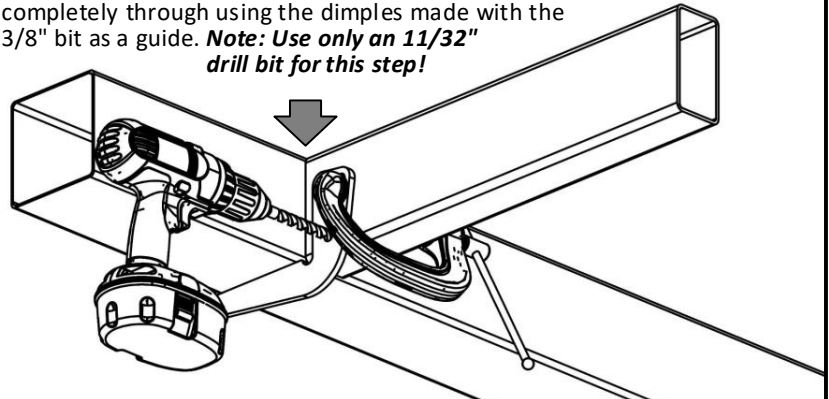
**Step 2 (N&B): Final Step!** Mount the Part to your vehicle's frame using the supplied Nuts and Bolts. Use a torque wrench on the Nuts to slowly tighten the assembly to **25-30 ft. lbs.**

### HOW TO FASTEN PARTS USING ONLY SELF-TAPPING BOLTS (STB)\*

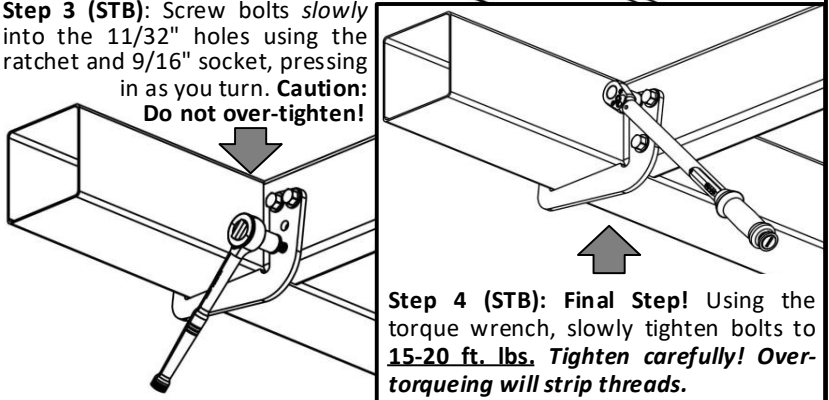
**Step 1 (STB):** With your Part clamped in place and using the Part's bolt holes as a guide, use the 3/8" bit to drill *slightly* into the steel (just to mark the hole centers) as shown in inset.



**Step 2 (STB):** Using the 11/32" bit, drill the holes completely through using the dimples made with the 3/8" bit as a guide. **Note: Use only an 11/32" drill bit for this step!**



**Step 3 (STB):** Screw bolts *slowly* into the 11/32" holes using the ratchet and 9/16" socket, pressing in as you turn. **Caution: Do not over-tighten!**



**Step 4 (STB): Final Step!** Using the torque wrench, slowly tighten bolts to **15-20 ft. lbs.** Tighten carefully! Over-torquing will strip threads.

**\* Note:** The mounting bolts supplied with your order are self-tapping bolts, meaning that they can cut their own threads into metal, yet they work equally well with the nuts that were also supplied. *Use what works best for your application.*

**Self-Tapping Bolts (STB)** work best on 0.120" (~1/8") or thicker steel. To use **Nuts and Bolts (N&B)**, frame steel thickness should be 0.188" (3/16") or less as thicker steel may require longer Bolts. **Most frames are 0.120" thick.**

Visit [www.mount-n-lock.com/installs](http://www.mount-n-lock.com/installs) for full-size instructions.