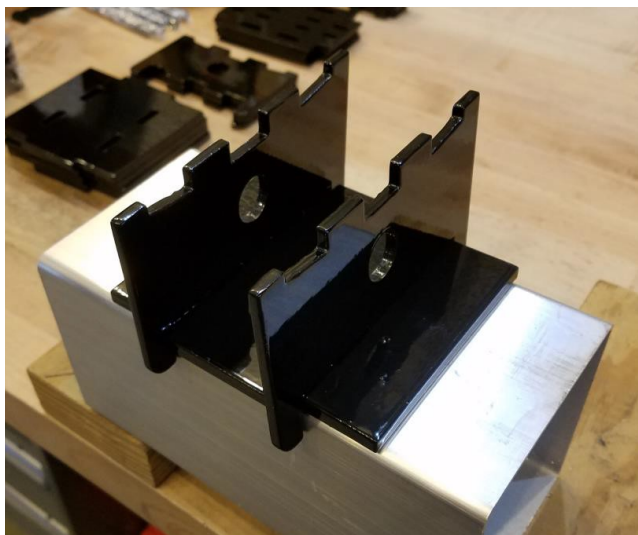
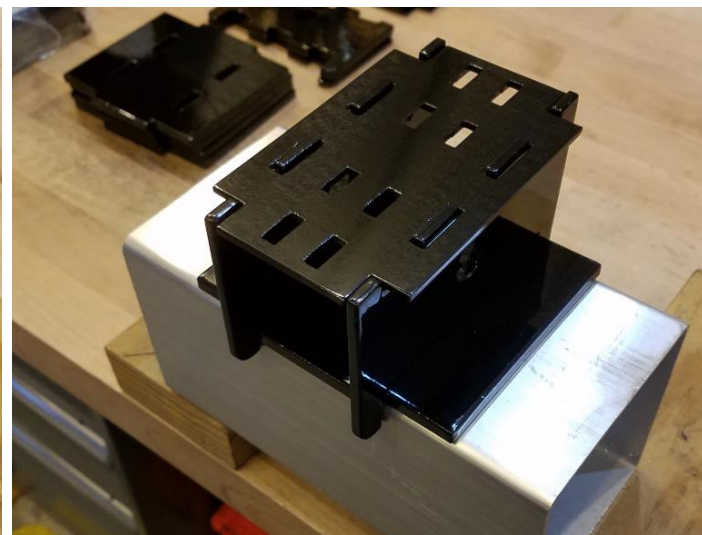




1. Set Base Plate on top of Bumper as shown.



2. Insert Side Plates into outermost Slots of Base Plate. Long Tabs go toward Bumper.



3. Set Pressure Plate atop Side Plates using outermost Slots in Pressure Plate.



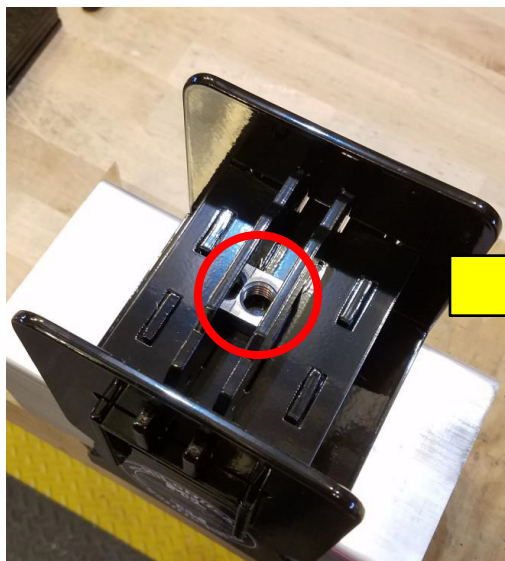
4. Set Retention Brackets atop Pressure Plate using innermost slots of Pressure Plate. **NOTE:** If you are mounting hitch inverted, move current assembly to underside of bumper.



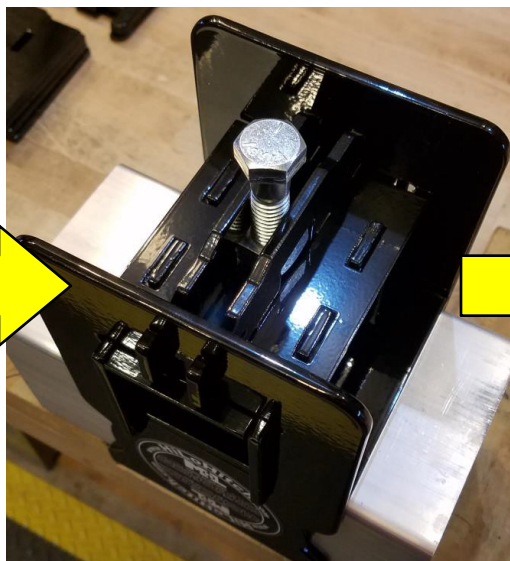
5. Hook Face Plate onto notches on Retention Brackets, swing in toward Bumper until tight against Bumper. Repeat with other Face Plate.



6. At opposite end of Face Plates, install Retention Fasteners. Use Coupling Nut, 2 Flange Bolts, and 1 Flat Washer at each end (ignore 2 Flat Washers shown at far end of Coupling Nut). Finger-tighten bolts for now.



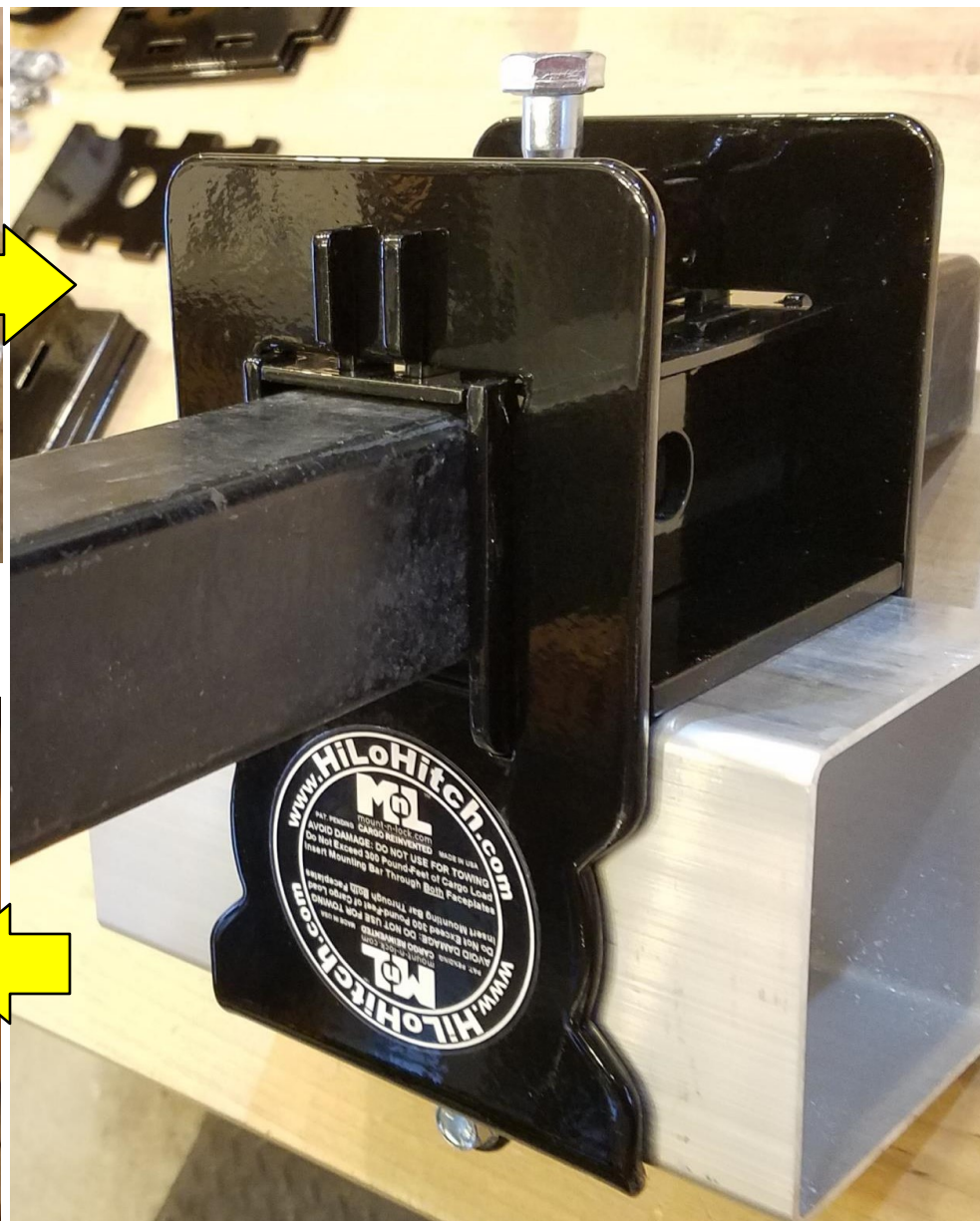
7. Slide Pressure Nut in from side, *making sure that flat face of Pressure Nut is facing away from Bumper.*



8. Now screw Pressure Bolt into Pressure Nut until Pressure Bolt lightly rests against Pressure Plate.



10. Return to Retention Fasteners and wrench-tighten to 15 foot-pounds of torque. Your Hitch is now installed. When in use, tighten Pressure Bolt until Pressure Plate prevents movement of your Hitch Accessory.



9. Insert your hitch accessory's mounting bar into Hitch and wrench-tighten Pressure Bolt enough to snug-up Hitch on Bumper.